

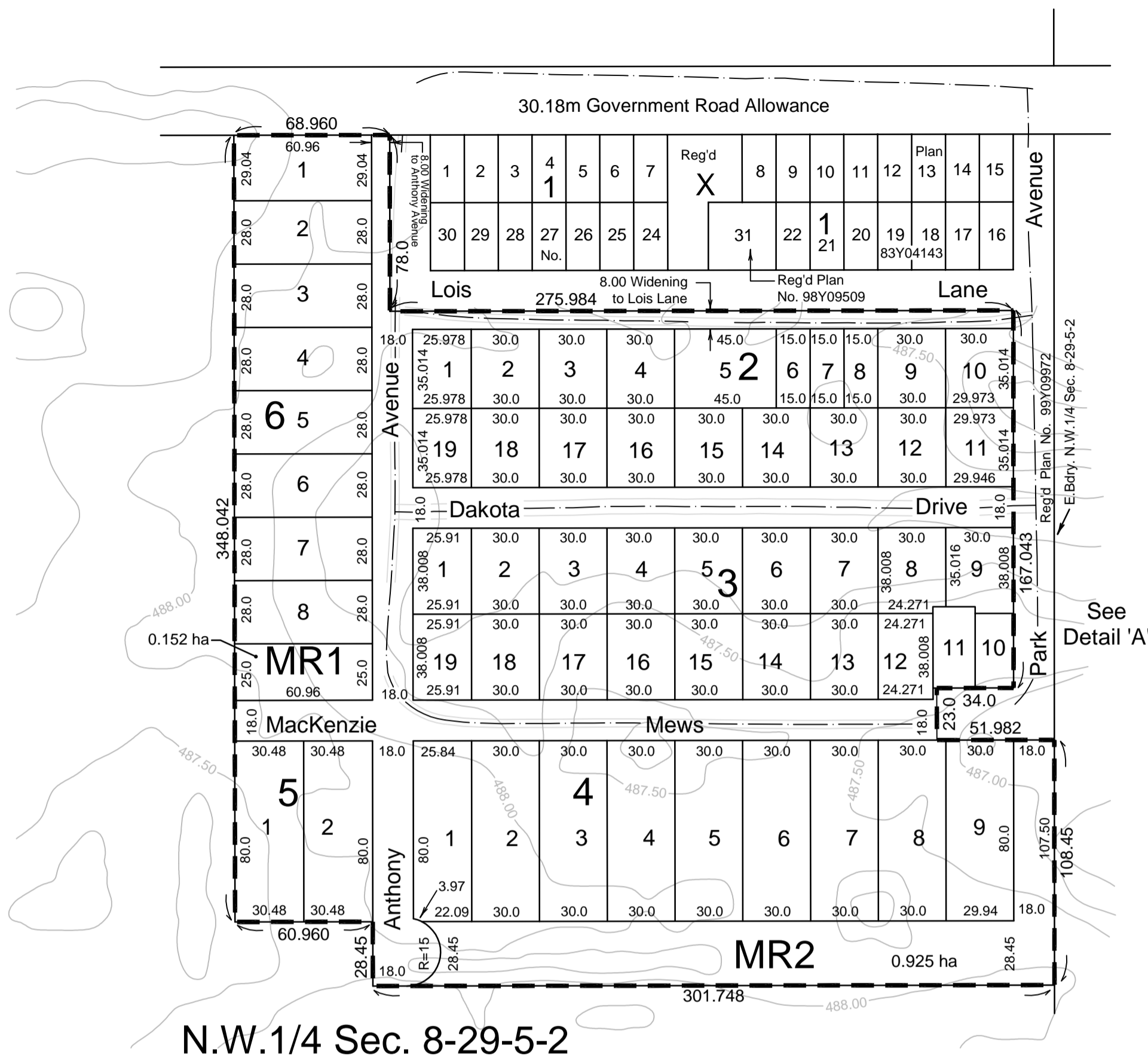
Plan Showing
PROPOSED SUBDIVISION
of Part of Reg'd Plan No. 99Y09972
and Part of N.W.1/4 Sec. 8-29-5-2
Saskatchewan
2009
Scale 1:2000

NOTE

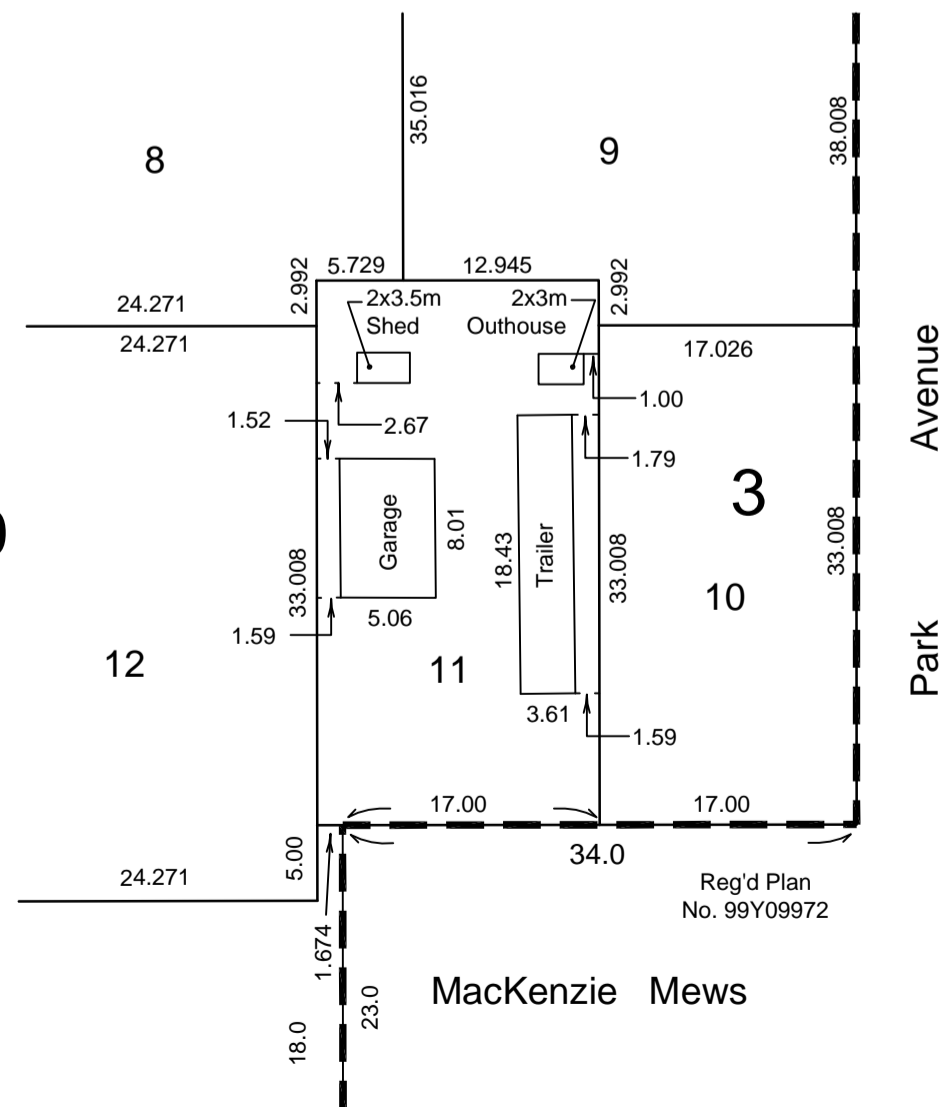
Measurements are in metres and decimals thereof.
Area to be approved is outlined by a bold dashed line and contains approximately 10.77 ha. Areas for widening to Lois Lane 0.213 ha and Anthony Avenue 0.062 ha. Dimensions are approximate and are subject to changes of up to 5m at time of legal survey. Street widths will remain as shown, lot dimensions may vary but will not go below minimum allowed by zoning.
Centerline of existing roads shown as a thin dashed line.
Contours copied from 1983 contour plan prepared by Falken Associates Ltd. Datum used unknown.

Dated at Regina in the
Province of Saskatchewan
This ___ day of October, 2009.

Guy Craig, S.L.S.
Saskatchewan Land Surveyor



Detail "A"
Scale 1:500



KEY PLAN
Scale 1:5000

